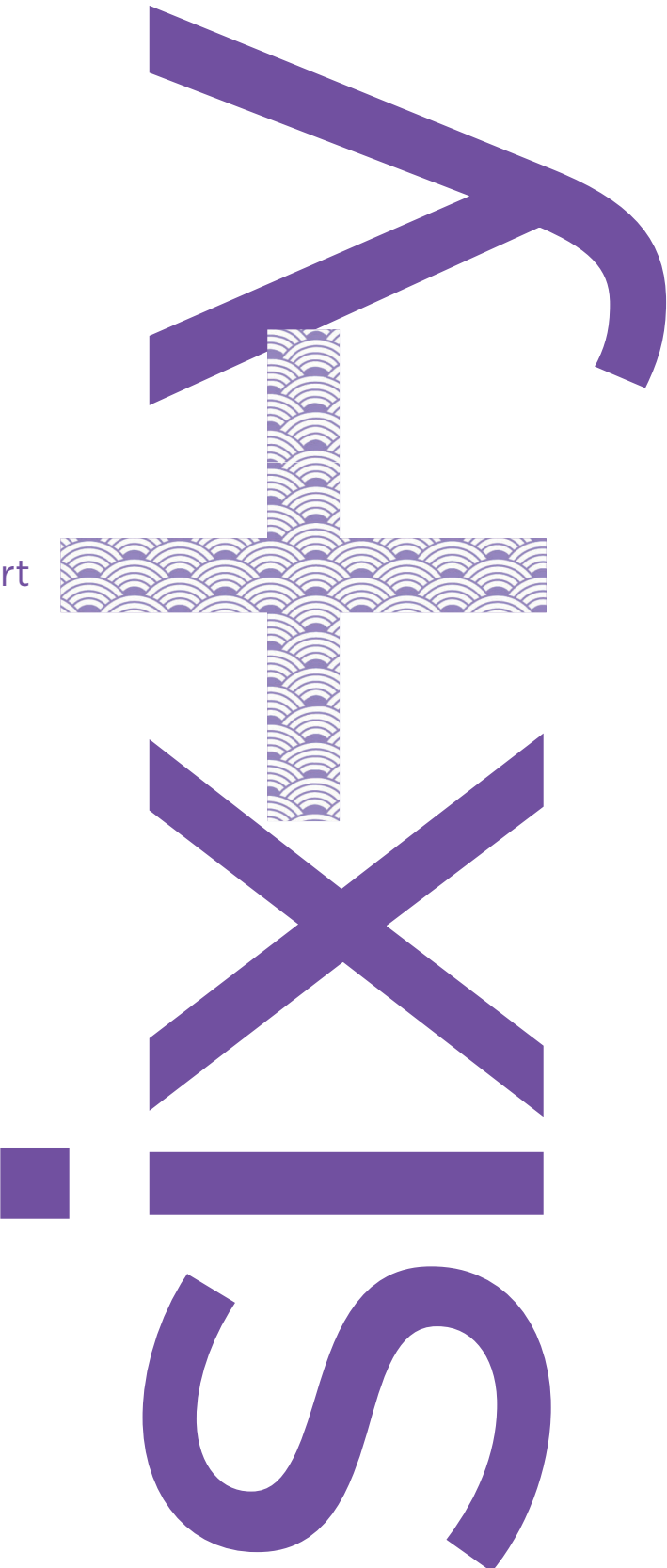


two thousand eleven annual report



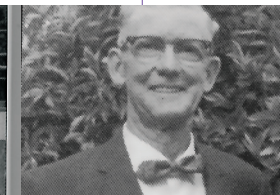
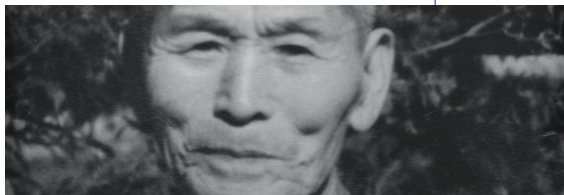
esgvjcc 60 years + counting

1936 Eijiro Machida
donates land.

1936 Language school
moves to West Covina.

1942 EO9066 forced
evacuation of all those of
Japanese-American descent.

1946 Thanks to Mr. and Mrs.
Roberts the center was
protected. Members return
from internment.



Celebrating the 60th Anniversary of the East San Gabriel Valley Japanese Community Center (ESGVJCC) is truly a momentous occasion in our history and would not have been possible without all those who have and continue to support the ESGVJCC in order to ensure that it will continue to be the place where Japanese arts, culture, and education come alive.

Looking back, the ESGVJCC has garnered an astonishing record of events, exhibitions and presentations. There is no equivalent to the experiences in participating in our events, the excitement in watching martial arts demonstrations, seeing children practice the Japanese language, admiring flowers and bonsai that are beautifully arranged, or to witnessing the energy of our seniors during the Senior Wellness Program.

Our 2011 Annual Report allows us to reflect on a sixty year history of programming as well as share our vision for the future. We continue to renew our commitment in serving the greater community as the vibrant Japanese Community Center through social services, artistic,

recreational, and educational programs, and to be the focal center where artistic creativity and cultural heritage are nurtured and supported.

During our 60th Anniversary celebration, we honored fourteen women who created the foundation on which the ESGVJCC stands—our Founding Mothers. Most of them did so without any thought of recognition or personal gain. Some were instrumental in their significant contributions to specific projects. Others became rooted in the ESGVJCC family and have continued to support its mission to this day. The common thread among them, however, centers on the true meaning of community, sacrifice, hard-work, and perseverance. They represent the heart of how and why the ESGVJCC was created and continues to thrive.

It is our hope that as you flip through these pages, you will see the importance of the ESGVJCC and help us make our dreams of the next sixty years come alive.



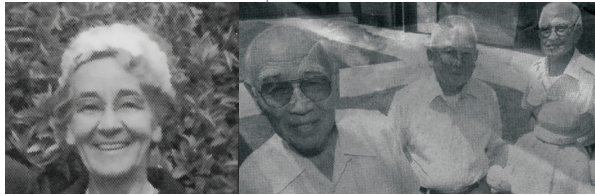
Sincerely,

Aya Kamimura
President, Board of Directors

Pearl Omiya
Executive Director

Early 1950s
Doors open and
activities resume.

1951 the East San Gabriel Valley
Japanese American Association
officially becomes East San Gabriel
Valley Japanese Community Center.



the here + now

2011 BOARD OF DIRECTORS + PROGRAMS



2011 Board

Aya Kamimura, *President*
Tim Itatani, *1st Vice President*
Jim Friesen, *2nd Vice President*
Joy Kitaura, *3rd Vice President*
Donna Kusumoto, *3rd Vice President*
Nicole Cherry-Yu, *4th Vice President*
Dawn Kiko M. Cheng, *4th Vice President*
Susie Kozono, *5th Vice President*
Denise Akune, *Secretary*
Glenn Nakatani, *Treasurer*
David Teragawa, *Parliamentarian*

Members-At-Large

Nolan Dyo
Shauna Hiranaka
Christopher Hubert
Danny Iwama
Phillip Komai
Frances Nakano
Wesley Nobuta
Grace Richardson
Joan Robertson
Kay Sakaue
Barbara Shirota
Donny Takemoto

Staff

Pearl Omiya, *Executive Director*
Brandon Leong, *Program Director*

Senior Services

Senior wellness program

Cultural Classes

Visual arts
Bonsai (*pine tree trimming*)
Ikebana (*flower arranging*)
Karaoke (*Japanese singing*)
Kime Komi Ningyo (*doll making class*)
Taiko (*Japanese drumming*)
Odori (*classical dancing*)

Martial Arts Courses

Aikido
Judo
Karate
Kendo (*Japanese fencing*)
Shinkendo (*Japanese swordsmanship*)

Recreational Classes

Line dancing
Ballroom dancing
Hula dancing
Golf
Yoga
Zumba

Educational Programs

Japanese language school
Computer literacy courses

Youth Programs

Nikkei Youth Organization
Student exchange program
Youth basketball program

1958 West Covina Judo Dojo begins.

1959 West Covina Buddhist Temple is formed and the Japanese Language School is started.

1960 Gardeners Association is established.

1965 New location is purchased at current Puente Avenue location.



In 1936, Mr. Eijiro Machida donated one acre of his land so that the Japanese farming community in the San Gabriel Valley could have a place where they could teach their children Japanese language and culture. Beginning humbly with the Japanese language school and a judo dojo, the community center was also a place for group meetings and social activities.

During World War II, all persons of Japanese American descent were forced to leave their homes and relocate into ten different internment camps. During the war, deed holders Nobue Sera and Chiye Hashimoto Taniguchi entrusted the keys of the center to Mr. and Mrs. Ted and Hazel Roberts. A center member said, "If it wasn't for [Roberts], the original building we had would have been vandalized and torn up while we were gone." Mrs. Hazel Roberts watched over the facility, leasing it to West Covina schools to help pay for the upkeep and property taxes. When the members came back in 1946, the center was just as the families remembered it.

Under the leadership of Kimio Hatakeyama, Frank Konno, and Yosh Sogioka, the doors were open once again and Ms. Sera and Ms. Taniguchi turned over the deed to these three men. Activities resumed with the Japanese language school, judo classes for children, the Buddhist Church, Gardeners' Association and many other organizations.

In February 1951, the East San Gabriel Valley Japanese American Association was officially

changed to the East San Gabriel Valley Japanese Community Center (ESGVJCC) as the State of California chartered the center a non-profit corporation.

In 1964, the ESGVJCC faced a crisis due to the phenomenal growth of the City of West Covina. The city wanted to expand its central core and asked the ESGVJCC to move in order to create roads and a shopping center. A year later, the property located on Puente Avenue was purchased for \$95,000 from the Shepherd of the Valley Lutheran Church. Shortly after, Mr. Frank Yamashita donated and planted all the black pine trees on the facilities' front lawn. In 1974, Mr. Yamashita celebrated his 70th birthday by planting the seventy juniper cypress trees that border the ESGVJCC's perimeter.

In the 1950s and 1960s, the ESGVJCC was experiencing phenomenal growth as well with many Japanese American families moving from urban areas into the suburbs. The need for a larger facility became more and more apparent. It was decided to keep the original social hall and build the gym, kitchen, dining room and classrooms. Under the leadership of Mr. Henry Miyata, Building Committee chair, Mr. Roy Iketani, Finance Committee chair, and President Mr. Leo Hayashi, the fund drive for this enormous project began on November 13, 1971 with \$125,000. The total cost for the project was \$300,000. Thirteen families put their homes up as collateral to finance this project while all of the families at the ESGVJCC rallied together to raise the remaining \$175,000.

1967 West Covina
Buddhist Temple hosts
its first Obon Festival.



the past

A RETROSPECTIVE

The 1980s were an exciting time at the ESGVJCC. On May 10, 1981, the ESGVJCC held a special "mortgage burning" ceremony to commemorate the end of its first building project. Two years later, the ESGVJCC began the "Expanding Our Horizons" fundraising drive. Under the leadership of Building Fund chairman Kimio Hatakeyama, this fund drive was able to raise over \$100,000 for a new two-story building between the Social Hall and the gym that provided additional classroom and meeting space. In 1984, Barbara Yanase-Shirota became the ESGVJCC's first woman president, served for three terms, and continues to serve on the Board of Directors as a member-at-large.

The 2000s brought in a new generation of leadership at the ESGVJCC. In May of 2006, plans to rebuild the Social Hall were approved by the City of West Covina, but with only \$196,000 in our Building Fund and a \$75,000 federal HUD grant secured by Congresswoman Hilda Solis, the Social Hall Capital Campaign was launched in September of the same year under the leadership of Mr. Glenn Nakatani. The cost of the new Social Hall was estimated to be \$1.5 million and through the efforts of the Development Committee, headed by Mr. Robert Leong, the ESGVJCC continued forward to raise the necessary funds.

With the campaign launched, the ESGVJCC decided it was imperative to hire a full-time executive director to manage the ESGVJCC's fundraising efforts and the upcoming con-

struction. Ms. Pearl Omiya, who had been the ESGVJCC's Operations Manager, was hired by December 2006. With forty percent of the budgeted amount in hand, the ESGVJCC obtained a construction loan from Pacific Commerce Bank and demolition of the original social hall was scheduled on May 12, 2008.

In just seven months, the social hall was reopened, allowing for three classrooms for Japanese school, two new restrooms, a fully functioning library, and larger space for classes and programs to practice and learn. With a \$500,000 permanent loan, the fundraising continued to retire the loan. ESGVJCC was able to raise 76% of its \$1.5 million goal. It was through the great generosity of George, Ruri, Lisa, and Nathan Sugimoto that the ESGVJCC was able to retire the construction loan and complete this tremendous project.

As we celebrate sixty years, we must thank all those who have come before us, laying down a foundation for us to build upon and grow. As we reflect on how far we have come, we realize how lucky we are to have such amazing community of individuals. Thank you to our twenty-five programs and the 1000 member families for your continued support. We are truly indebted to you. Thank you to everyone for a wonderful sixty years. 🙏

1969 Covina Kendo Dojo is formed.

1970 Sabers/ Saberettes Youth Basketball is formed.

1971 Thirteen families mortgage homes to finance expansion project.

1974 Mr. Yamashita celebrates 70th birthday by planting 70 juniper cypress trees around the ESGVJCC.

1981 Kishin Daiko (then West Covina Taiko) forms.

1981 Mortgage burning ceremony.



EAST SAN GABRIEL VALLEY JAPANESE COMMUNITY CENTER—GAKUEN JAPANESE LANGUAGE SCHOOL

In 1930, the Japanese Language School was first established in the City of Baldwin Park, California. It was known as the Baldwin Park Japanese Language School.

In 1936, the school was relocated to the property in West Covina donated by Mr. Eiji Machida. At this time, the school changed its name to West Covina Japanese Language School.

The West Covina Japanese Language School was closed during World War II. In 1959, due to the efforts of ESGVJCC Board member Kimio Hatakeyama, Reverend Nitta and Mrs. Ikeda of Higashi Honganji Buddhist Temple, the West Covina Japanese Language School re-opened its doors to the children. At this time the school only consisted of twenty elementary level students taught by two teachers. Its operation hours were from 9 am to noon every Saturday morning. The West Covina Japanese Language School—Gakuen became a part of the East San Gabriel Valley Japanese Community Center and served as one of the major gathering places for children of Japanese ancestry.

In 1966, Gakuen became a member of The California Japanese Language Schools Association. This movement allowed the Gakuen to purchase textbooks and utilize the existing curriculum to improve its instruction. Also, the Gakuen Board of Directors was formed and

started to take an active part in the school's operation. Undokai, "Sports Day", was included as a Gakuen event for the first time in 1970.

In 1973, additional buildings were added to the property. This allowed Gakuen to expand its operation and establish high school and junior high school level classes. During the next ten years, Gakuen added more cultural events to its curriculum. These events included a school picnic, Gakugeikai (school play), and Mochitsuki (mochi-making).

Gakuen underwent many major changes in the following twenty years. First, much of the school population included non-Japanese ancestry students. Second, Gakuen expanded its operation to include kindergarten through high school level classes. In addition, the Adult Conversation Classes was now in operation.

As of 2011, East San Gabriel Valley Japanese Community Center—Gakuen Japanese Language School consists of 115 K-12 students and ten adult conversation students. Its operation hours are from 9 am to 12:30 pm every Saturday. Adult Conversation Classes meet every Monday at 7 pm to 9 pm for Beginning Conversation and every Tuesday from 7 pm to 9 pm for Intermediate level students. ■

1982 ESGVJCC
sponsors its' first
Nisei Week Festival
candidate.

1983 ESGVJCC
Leisure Club is
formed.

1984 Office
building
construction.



the people ESGVJCC

COVINA KENDO DOJO

Covina Kendo Dojo's history began in 1969 when the late Akio Hara sensei, Takeshi Yamaguchi sensei and Makoto Yamaguchi sensei along with a few dedicated students opened the dojo. A little over forty years has passed, and the Covina Kendo Dojo has since grown to more than fifty members ranging from five to seventy years old.

During these forty years many of the students have been selected to compete in the All United States Kendo Championships and the World Kendo Championships. Some of whom won medals in the very competitive world class events.

Kendo is much more than a competitive art—its application goes much deeper into improving the human spirit.

It is said that, "Kendo is to discipline the human character through the application of the principles of the katana." Kendo teaches proper manners, courtesy, respect to others, self-discipline and many more traits that are important aspects in developing human character. ■

SABERS/SABERETTES YOUTH BASKETBALL

The Sabers/Saberettes Youth Basketball was formed in 1970 by Don Mita and Bob Yamashita with only a handful of boys and girls teams. This youth program was formed to provide Japanese American youth the opportunity to play organized basketball during a time when they could not compete in other basketball organizations.

Forty years later, with basketball becoming a passion for many JA youth, the Sabers Basketball Organization has over twenty teams and 100 boys and girls of all ages learning basketball skills and developing lifelong skills such as teamwork, dedication and commitment. ■

1985 Social Ballroom
Dance Class begins.

1987 Ikebana (Flower
Arranging) begins.

1990 Matsu Golf
Club is formed.

2000 Student Exchange
Program begins.

2002 ESGVJCC partners
with City of West Covina
to hold 1st Annual Cherry
Blossom Festival.

statement of financial position

FOR THE YEAR ENDING DECEMBER 31, 2010

Investments held by the Organization consisted of certificates of deposits carried at fair value. As of December 31, 2010 investments totaled \$63,080.

The Organization obtained a construction loan to fund the building of a new social hall. In 2009, the Organization converted the construction loan to a term loan with a variable interest rate of prime, as quoted in the Western Edition of the Wall Street Journal, plus 1.5%. The loan is amortized over 25 years, with a balloon payment due on May 26, 2019. The loan is secured by the real property owned by the Organization. As of December 31, 2010, the outstanding balance was \$213,096.

Temporarily restricted net assets are available for the following purposes at December 31, 2010:

Building + Capital Fund	\$353,845
Kasuda Fund	15,197
Ito Fund	1,1079
	<u>\$370,121</u>

Net assets were permanently restricted for the following purposes at December 31, 2010:

Building	\$30,000
Land	46,000
Acc. Depreciation	<u>(30,000)</u>
	<u>\$370,121</u>

In 2009 and 2010, there was a campaign to raise funds for the construction and payoff of the Organization's Social Hall. As of December 31, 2010, pledges receivable totaled \$14,225, net of an allowance for uncollectible pledges of \$7,000.

ASSETS

CURRENT ASSETS

Cash + Cash Equivalents	\$619,315
Investments	63,080
Pledges Receivables	14,225

Total Current Assets

696,620

PROPERTY + EQUIPMENT

Building	906,266
Improvements	758,226
Land	46,000
Equipment	63,411
Furniture + Fixtures	51,627
Less: Accumulated Depreciation	<u>(785,151)</u>

Net Property + Equipment

1,040,379

TOTAL ASSETS

\$1,736,999

LIABILITIES + NET ASSETS

Long Term Liabilities

Loan Payable	213,096
--------------	---------

Total Liabilities

213,096

Net Assets

Unrestricted Net Assets	1,107,782
Temporarily Restricted Net Assets	370,121
Permanently Restricted Net Assets	<u>46,000</u>

Total Net Assets

1,523,903

TOTAL LIABILITIES + NET ASSETS

\$1,736,999

2004 ESGVJCC helps establish sister city relationship between City of West Covina + City of Kurobane.

2008 Social Hall Construction.

2009 ESGVJCC Nikkei Youth Organization and Kambei Art Club are formed.

the present

2010 AUDIT REPORT

statement of activities

FOR THE YEAR ENDING DECEMBER 31, 2010

	Unrestricted Operating Fund	Temporarily Restricted Fund	Permanently Restricted Fund	Total
REVENUES, GAINS + OTHER SUPPORT				
Program Income	\$219,395	-	-	\$219,395
Grant	10,000	-	-	10,000
Fundraising	90,486	-	-	90,486
Donations	5,233	443,751	-	448,984
Dues	49,775	-	-	49,775
Rent Income	25,227	-	-	25,227
Interest Income	479	865	-	1,344
Net Assets Released From Restrictions	360,609	(360,609)	-	-
TOTAL REVENUES, GAINS + OTHER SUPPORT	761,204	84,007	-	845,211
OPERATING EXPENSES				
Program Expenses	163,012	-	-	163,012
Fundraising Expenses	44,564	-	-	44,564
Building Operations	123,307	-	-	123,307
General + Administrative	139,336	-	-	139,336
TOTAL OPERATING EXPENSES	470,219	-	-	470,219
CHANGE IN NET ASSETS	290,985	84,007	-	374,992
NET ASSETS AT BEGINNING OF YEAR	816,797	286,114	46,000	1,148,911
NET ASSETS AT END OF YEAR	1,107,782	370,121	46,000	1,523,903

the present

2010 AUDIT REPORT CONTINUED

2009 ESGVJCC partners with Little Tokyo Service Center to create ESGV DISKovery Center.

2010 Senior Wellness Program begins.

2010 ESGVJCC sponsors first Nikkei Community Internship Intern.

statement of functional expenses

FOR THE YEAR ENDING DECEMBER 31, 2010

	Program	Management + Admin	Fundraising	Total
Bank Charges	-	458	-	458
Depreciation Expense	48,153	-	-	48,153
Equipment Lease	3,885	-	-	3,885
Honorarium	1,066	-	-	1,066
Insurance	-	24,051	-	24,051
Interest Expense	22,128	-	-	22,128
Miscellaneous	-	1,744	-	1,744
Newsletter + Publications	-	-	9,799	9,799
Office Expense	-	3,927	-	3,927
Payroll	55,934	15,031	54,093	125,058
Payroll Processing	-	1,298	-	1,298
Payroll Taxes	11,486	1,150	4,351	16,987
Permits + Fees	-	558	-	558
Private Rental Expense	2,326	-	-	2,326
Professional Fees	3,000	-	3,000	6,000
Property Tax	3,724	-	-	3,724
Public Relations	3,217	-	-	3,217
Repairs + Maintenance	25,144	-	-	25,144
Scholarships	4,950	-	-	4,950
Special Event/Fundraiser Expenses	-	-	44,564	44,564
Stipends	1,081	-	-	1,081
Uncollectible Pledges	-	-	2,000	2,000
Utilities	24,157	-	-	24,157
TOTAL EXPENSES	304,195	48,217	117,807	470,219

2011 ESGVJCC holds first annual Family Health Fair.

2011 Social Hall loan retired by generous donation by George + Ruri Sugimoto + Family.



the future

2011 DONATIONS

\$100000

George, Ruri, Lisa +
Nathan Sugimoto

\$5000-\$9999

Capital Group Companies
Charitable Foundation
ESGVJCC Gakuen
Safeco Insurance

\$1000-\$4999

Lee + Karen Ezaki
Kuniko Higaki
Jeff + Carolyn Hiraishi
Aki + Aya Kamimura
Phillip Komai

Katsuhide Kinjo
Kevin Kubomoto
Ron Sakamoto
Jon + Barbara Shiota
Gary + Irene Takamatsu

Edison International
Lorene Miller
In Memory of
Mrs. Reiko Moreno

\$500-\$999

Denise Akune
Kaoru + Sachie Hisamoto
Dick + Hisako Koga
Stan + Shirley Kubota
Howard + Tomoko Kwan

John + Lily Miyata
Mataro Nakamura
Wes + Karen Nobuta
Takashi + Beverly Oki
Alexander Sario + Pearl Omiya

Larry + Yoshiko Oshima
Genkichi Oyadomari
Carole + Stephen Sugimoto
Emiko Takamatsu

Capital Group Companies -
Grace Richardson
Eibukan Goju-Ryu Karate Do
ESGVJCC Leisure Club

In Memory of
James + Myrtle F. Oshiro
Microsoft Matching Gifts
Program - David Jung

<\$500

Mutsuko Sata Adachi
Evan + Hanako Brown
Frank + Naomi Chang
Helen Fukao
Donald + Lynn Fujimoto
Clara + Tom Furukawa
Shauna Hiranaka
Russell + Nancy Hombo
Hideko Ikehara
Shirley Iriye
Toshiko Ito
Roy Kuroyanagi +
Kristy Hyomi Kim
Yoshiye Kitayama

Abe + Wendy Kochi
Meiko Kochi
Elsie + Akira Kurashige
Frances + Philip Chinn
Kuwahara
Paige Leemhuis
Brandon Leong
Myles Glasgow + Edith Maeda
Lori + Albert Magallanes
Lorene Miller
Robert Miyake
Henry Miyashiro
Jose + Karen Morin
Neil + June Murakami

Lloyd + Wendy Nicolay
Rudy + Carol Obrero
Gerald + Verda O'Day
Michiko Oku
Sakai + Patricia Onodera
Jim + Wanda Oshiro
Jennifer Sato
Jo-Ann Shimizu
Mark + Denise Shiokari
Jon + Barbara Shiota
Beans + Lucy Sogioka
Judy Sugiyama
Hiromu + Utako Takemoto
Bert + Ailene Tanaka

Tatsuo + Ritsuko Tanaka
Charles + Setsuko Tomlin
Take + Horoko Uesugi
Fuji Uyeda
Michiko Waslow
Cliff + Sharilyn Watanabe
Paul + Marilyn Wong
Edward + Kiyo Yamaguchi
Bob + Kay Yamashita
Ted Yamashita
Aki + Flora Yokoyama
In Memory of
Mrs. Hideko Tokeshi
Mr. Tom Tanaka

Covina Kendo Dojo
Edison International Volunteer
Grant - Michele Abe
ESGVJCC Gakuen
Rowe Sensei's Class
ESGVJCC Social Ballroom
Dance Club
Northrup Grumman - Roy Higa
San Gabriel Nikkei
Singles Club
Union Bank - Paul Wong

CAR DONATION

Ann Hamabata
Sam + Susie Kozono
Wing Quon

esgvjcc 60 years + counting

